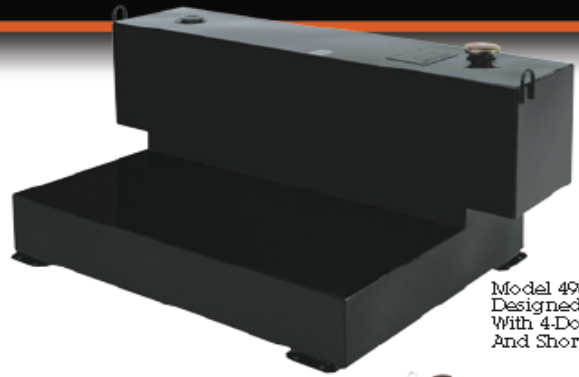


STEEL Tanks feature 14-gauge steel construction for long-term durability. Internal baffles reinforce the high-strength design and control the flow of the contents when moving. All tanks have been pressure tested.



Model 498002  
Designed For Trucks  
With 4-Door Cabs  
And Short Beds



484000



485000



486000



480000

**ALL TRANSFER TANKS FEATURE:**

- High-Strength 14-Gauge Steel construction for long-term durability
- Internal Baffles add strength and control the flow of the contents when moving
- 2" NPT Bungs on both sides for easy, convenient access
- Lockable Cap and Coupler prevent pressure build up. Filter system recommended
- Lifting Rings to assist with moving an EMPTY tank. Rings will not support a tanks and contents
- Heavy-Duty Brackets to secure the tank securely to the truck bed
- Tanks have been pressure tested for leaks

CAUTION: Do not connect the tank directly to a vehicle's fuel system. Tanks are designed for combustible liquids such as diesel fuel AND DO NOT meet DOT Specifications for flammable liquids such as gasoline. Contact local Fire Marshall or Fire Chief to determine restrictions

MODEL #	FINISH	UPC CODE	DESCRIPTION	SHIP WEIGHT	SHIP CU. FT.	SHIPS UPS Y/N	PRICE
<b>L-SHAPED TANKS</b>							
480000	WHITE	0-43419-90204-6	103 GAL. L-SHAPED TANK	200.0	31.0	N	\$516.71
482000	WHITE	0-43419-90412-5	51 GAL. L-SHAPED TANK	106.0	15.6	N	\$320.64
<b>RECTANGULAR TANKS</b>							
484000	WHITE	0-43419-90210-7	96 GAL. RECTANGULAR TANK	140.0	17.1	N	\$446.80
<b>SQUARE TANK</b>							
485000	WHITE	0-43419-90212-1	50 GAL. SQUARE TANK	85.5	8.9	N	\$310.99

# WD-Wholesale Direct

Trailer Parts and Emergency Lighting Equipment  
5620 West 65th St., Chicago, IL 60638