



WHOLESALE DIRECT, INC.

Sales Flyer

Universal Mount Window Protector

- Protect your cab
- Mount accessories
- Secure your cargo
- Quick installation—no drilling required
- Black powder coat finish resists rust and corrosion
- UPS shippable



Part No. 85100: for full-size pickup trucks with cabs up to 24" above bed, e.g. Ford F-150 all models 1997-present, Ford F-250/350 Super Duty Reg. Cab 1997-99, Chevy/GMC 1500/2500 Reg. Cab, Ext. Cab & Crew Cab 1999-present, Dodge Ram 1500 Reg. Cab 1997-2001, Dodge Ram 1500 Quad Cab 1997-2000, Dodge Ram 1500 Quad Cab (155" wheel base only) 2001, Dodge Ram 2500 Reg. Cab 1997-2001.

Part No. 85200: for full-size pickup trucks with cabs up to 26" above bed, e.g. Ford F250/350 Super Duty Reg. Cab: 2000-present, Ford F250/350 Super Duty Super Cab & Crew Cab: 2000-present, Chevy/GMC 2500 HD/3500 all cab styles: 2003-present, Dodge Ram 1500 Quad Cab: 2001-present., Dodge Ram 2500 Reg. Cab: 2002-present, Dodge Ram 2500 Quad Cab: 2003-present, Dodge Ram 3500 Reg. Cab & Quad Cab: 2003-present, Dodge Ram Mega Cab: 2006

Part No. 5230912 Cable Step

- 1 1/4" galvanized wire cable
- Cable welded to 1 1/2" pipe sleeve ends
- 1-3/8" deep perforated anti-slip metal grip step
- 9" Tall x 12" Wide x 1-3/8" Deep
- Black powder coat finish



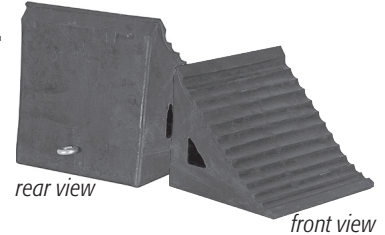
Part No. FS2797CH Large Folding Step

- Die cast aluminum
- Chrome plated
- Stainless steel springs retain step firmly in opened or closed position
- Conforms to NFPA specifications



Part No. WC796R Rubber Wheel Chock

- Reinforced rubber design
- Resistant to sun, salt, oil, & acid
- Includes Chain Eye

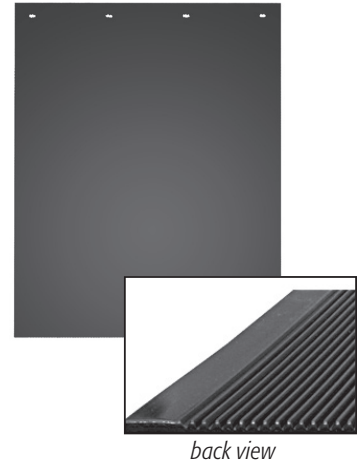


Spray Reducing Grooved Polymer Mudflaps

- 5/16" Thick poly mudflaps
- Heavy-Duty, no sail design
- Unique design minimizes spray
- Withstands subfreezing temps.
- Resists buildup of ice & snow
- Repels impact from road debris
- Stocked in white and black
- 25 gloss pigment foils are available for custom imprinting

Part No. B30SRP: 24"W x 30"H

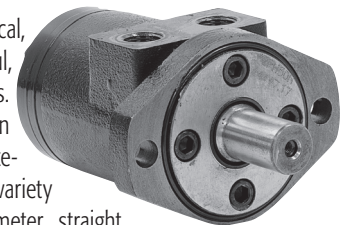
Part No. B36SRP: 24"W x 36"H



back view

HydraStar™ Hydraulic Motors

HydraStar™ Series motors are economical, efficient, small, compact, and powerful, designed for medium duty applications. These motors have the industry proven spool valve design combined with state-of-the-art gerotors. In addition, a wide variety of mounting flanges with a 1" diameter straight shaft, woodruff keyway, and 1/2" NPT port provides design flexibility. Direction of shaft rotation and shaft speed can be controlled easily and smoothly throughout the speed range of the motor, and equipment can be driven direct eliminating costly mechanical components



Part No. CM004P: 2.8 Displacement

Part No. CM034P: 7.3 Displacement

Part No. CM004P: 22.6 Displacement

—continued on back



WHOLESALE DIRECT, INC.

Part No. 8881100 Rear Observation Camera System

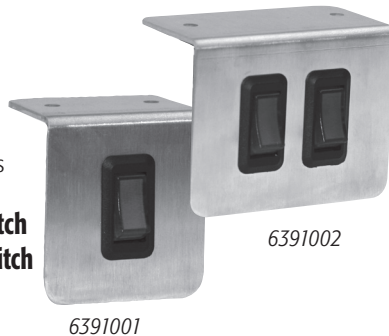


- Reduce Vehicle "Blind Spots"
- Improve Visibility, Obstacle Detection.
- 7" Color Analog LCD Monitor With Adjustable Mount
- Audio Function
- Waterproof Camera, IP67 Rated
- Night Vision, 18 Infrared LEDs
- Automatically turns on to rear view when backing vehicle
- 65.75' Wire Cable
- 10-30 VDC
- Up to 3 cameras can be used for multi-screen viewing of front, side or rear of vehicle
- Wireless Remote Controller
- Multi-language display

Switch Panels

- Open Aluminum Switch Panels
- Illuminated Red Rocker Switch
- Pre-Wired with Blade Type Fuses
- 14 different stick-on function labels included

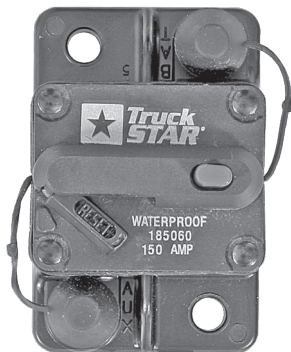
Part No. 6391001: Single Switch
Part No. 6391002: Double Switch



Hi-Amp Circuit Breakers

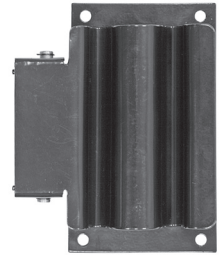
- Ideal for cranes, dump hoists, liftgates, plows, spreaders, etc.
- Manual push button trip
- 1/4-28 studs with rubber boots
- Waterproof

Part No. CB50PB: 50 Amp
Part No. CB100PB: 100 Amp
Part No. CB150PB: 150 Amp



Part No. SH675 Shovel Holder

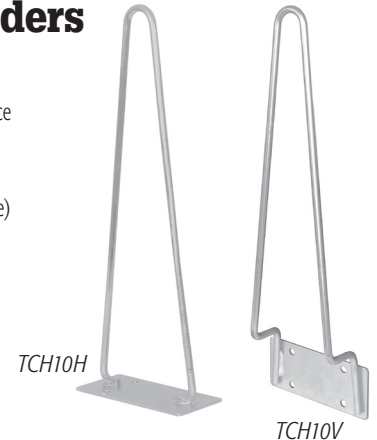
- HD spring mechanism secures shovel or other round handled tool
- Ideal for dump body applications
- Carbon Steel with Black Powder Coat finish



Horizontal & Vertical Mount Traffic Cone Holders

- Provides easy access to your traffic cones
- Ideal for vehicles with limited storage space
- Holds ten 18" cones or five 28" cones
- Pre-drilled to mount to any flat surface (hardware not included)
- Silver powder coat finish (zinc plated base)
- 22" tall

**Part No. TCH10H:
Horizontal Mount**
**Part No. TCH10V:
Vertical Mount**



Hose Reels

- Dual pedestal base & formed support arms
- Durable black powder coat finish
- Fully enclosed heavy-duty spring
- Full flow steel axle, 90° balanced pressure, sealed brass swivel joint
- Declutching gear protects spring from reverse winding
- Four direction, anti-sag roller guide
- 1/2" NPT inlet & outlet
- Durable, black or red exterior grade hose w/ crimped fitting rated for 300 PSI air/water
- Maximum hose temperature 210° F/100° C

Part No. HR3850: 3/8" x 50'
Part No. HR1250: 1/2" x 50'

