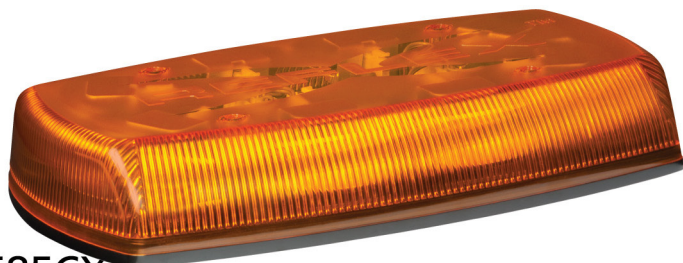




WHOLESALE DIRECT INC.

5620 West 65th Street • Chicago, IL 60638
T: (773) 585-7200 • F: (773) 585-7279
www.wholealedirectinc.com



5585A/5585CX

15" Class I LED minibar. Low profile, 12-24 VDC, Cal. Title 13, reflective technology, 18 flash patterns, synchronizable, amber, permanent mount, 3-yr warranty.

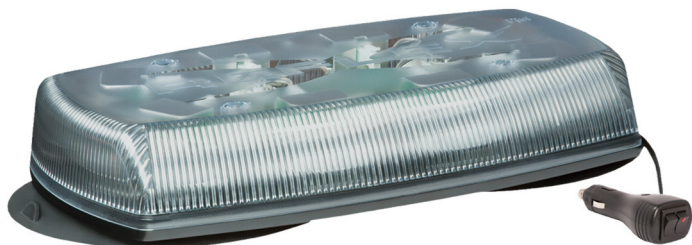
\$220.00



9014X

Concealed LED warning light. 6 1-watt LEDs, 16 flash patterns, synchronizable, Choose Illumination, 1" surface or hole mount, 12-24VDC, 2-yr warranty.

\$72.75



5585CA-VM/5585CX-VM

15" Class I LED minibar. Low profile, 12-24 VDC, Cal. Title 13, reflective technology, 18 flash patterns, synchronizable, amber illumination, vacuum-magnet mount, 3-yr wty.

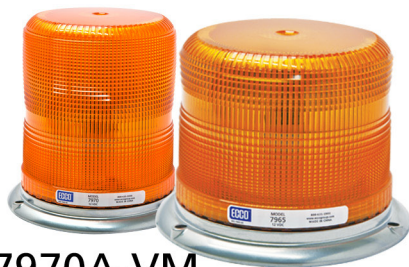
\$249.00



3510A

SAE Class I surface mount LED head. 24 1-watt LEDs, 16 flash patterns, synchronizable, amber, 12VDC, 5-yr warranty.

\$76.99



7965A/7970A/7965A-VM/7970A-VM

SAE Class I LED beacon. Low Profile, aluminum base, 12VDC, 2.4A, Pulse8 flash pattern, 75FPM, 3-bolt/pipe mount, amber, 2-yr warranty.

\$94.00 For Permanent \$124.00 for Vacuum Mag



ED0001X

SAE Class I, surface or bracket mount LED head. 24 flash patterns, synchronizable, choose illumination, 12 or 24 VDC, 1-yr warranty.

\$49.99



Special Prices
Good Until
12/31/12



Where applicable, change X in part number to available color: Amber, Blue, Green, Red



3810A

Class I surface mount LED head. 42 1/4-watt LEDs & reflectors, quad flash, amber, 12VDC, 5-yr warranty.

\$54.99



3715A

Class I surface mount LED head. 4 1-watt LEDs, 9 flash patterns, synchronizable, amber, 12VDC, 5-yr warranty.

\$89.00



7160A

Class I / Cal.T13 LED beacon. Low profile, 8 3-watt LEDs, hi/lo, 15 flash patterns, synchronizable, aluminum base, amber, 12-24VDC, 3-bolt/pipe, 5-yr warranty.

\$165.00



7460 A/7460 CA

Class I LED beacon. Low profile, 8 3-watt LEDs, Pulse8 flash pattern 80FPM, overhead heatsink, amber, 12-36VDC, 3-bolt/pipe, 5-yr warranty.

\$160.00



7945A / 7945A-VM

SAE Class II LED beacon. 12VDC, Pulse8 flash pattern, 3-bolt/pipe or vacuum magnet mount, amber, 2-yr warranty.

\$76.00 and \$93.00(VM)



E92004

Round LED worklamp, flood beam. Six 3-watt LEDs, 550 lumens, 10-30VDC, 0.6A, aluminum heatsink housing, acrylic lens, steel mounting bracket, 2-yr warranty.

\$57.99



E92006

Square LED worklamp, flood beam. Nine 3-watt LEDs, 1800 lumens, 10-30VDC, 0.9A, aluminum heatsink housing, acrylic lens, steel mounting bracket, 2-yr warranty.

\$85.99



E92007

Square LED worklamp, flood beam. Five 3-watt LEDs, 500 lumens, 10-30VDC, 0.6A, aluminum heatsink housing, acrylic lens, steel mounting bracket, 2-yr warranty.

\$45.99



E92008

Square LED worklamp, flood beam. Thirty 1-watt LEDs, 2400 lumens, 10-30VDC, 1.2A, aluminum heatsink housing, polycarbonate lens, steel mounting bracket, 2-yr warranty.

\$155.00



Special Prices
Good Until
12/31/12

